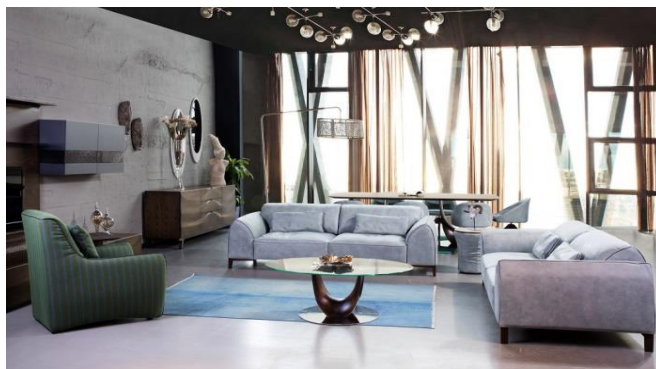


# MOKANA

INDUSTRIAL VINTAGE LIFESTYLE FURNITURE



## MODEL RIVOLIN

	S2	EKO	B	C	D	E	F
	ADORE	BULL	TOLEDO	ELEPHANT	KENIA	MASSIF(TOUCH)	TRIBE
	ALABAMA	RENO	(+SPLIT)		RANCHO		
	BLOQ	JERSEY			VINTAGE		
	BOSTON				SAVANNE		
	EMMERALD				GRANADA		
	LORD						
	RIVER						
	TORRERO						
3+SC1P	2.228	2.418	3.002	3.002	3.506	3.506	3.946
3,5	1.214	1.320	1.636	1.636	1.910	1.910	2.150
3	1.124	1.220	1.514	1.514	1.768	1.768	1.992
2,5	1.022	1.110	1.378	1.378	1.608	1.608	1.810
2	920	998	1.240	1.240	1.448	1.448	1.630
1	716	776	964	964	1.126	1.126	1.268

## TECHNISCHE GEGEVENS

GERAAMTE	HOUTEN REGELS + VEZELPLAAT						
ZITTING							
RUG							
BEKLEDING	LEDER + LEDER MET STOF BOVENLAAG + STOF						
POTEN	HOUT						
STIKSEL	TON SUR TON(MEEKLEUREND), BEIGE, WIT, ZWART						
MATEN(CM)	3,5	3	2,5	2	1	3+arm	SC1P
BREED	255	235	215	180	120		
HOOG	90	90	90	90	90		

DIEP	93	93	93	93	93		
------	----	----	----	----	----	--	--