

LAZIO-ZENATO



1-1-2024

	LEDER	LEDER	LEDER	STOF	L60 STOF	STOF
	<u>D</u>	<u>R</u>	<u>S</u>	<u>S1</u>	<u>S2</u>	<u>S3</u>
LAZIO (open naad)	596	618	646	490	516	596
ZENATO (geknepen naad)						

Model Lazio zonder wieltjes is model Lazaro
Model Zenato zonder wieltjes is model Zilly

Let op: Door het gebruik van verschillende mallen kunnen stiknaden van modellen in stof afwijkend zijn t.o.v de stiknaden van dezelfde modellen in leer
Alle maten zijn bij benadering, technische en stylistische veranderingen voorbehouden! Typefouten voorbehouden!

LAZIO - ZENATO



STITCHING



LAZIO
has an open seam
only available in leather



ZENATO
has a pinched seam
available in leather and fabrics

LEGS

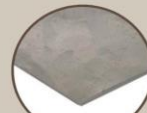


black or RVS

HEIGHT: 88 cm
DEPTH: 63 cm
WIDTH: 57 cm
SEAT DEPTH: 43 cm
SEAT HEIGHT : 53 cm
SEAT WIDTH: 51 cm
ARM HEIGHT: 69 cm

PRODUCT INFO

FRAME



steel

FILLING

BACK &
SEAT



foam HR 43



fibre wool

Model Lazio without wheels is model Lazaro
Model Zenato without wheels is model Zilly

Caution: with the use of different moulds, the stitching of models in fabrics can be different from the stitching of the same models in leather.
All sizes are approximate, technical and stylistic changes and typing errors are reserved.

 **het anker**
meubelindustrie